

# MAXIMATOR®

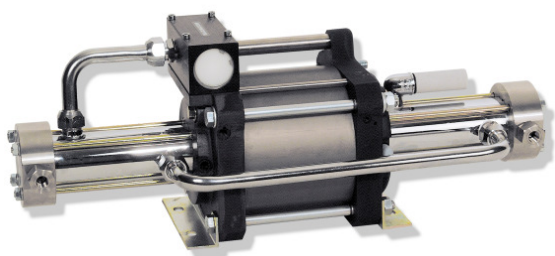
## Maximum Pressure.



High Pressure Technology • Testing Equipment  
Hydraulics • Pneumatics

### Technical Data Sheet

### Gas booster DLE 30-75



DLE 30-75  
single acting, single air drive head  
two stages

#### Technical Data:

Air drive pressure pL:	1-10 bar / 14,5 - 145psi
Pressure ratio i:	1:30 / 1:75
Compression ratio	1:50
Stage pressure ratio:	1:2.5
Minimum suction pressure pA:	15 bar
Maximum suction pressure pA:	12* air drive pressure pL
Maximum outlet pressure pB:	1,050 bar
Displacement volume/double stroke:	60 cm <sup>3</sup>
Maximum cycles:	120 / min
Stall pressure:	PB = 75* pL + 75/30*pA

#### Standard Connections:

Air drive:	3/4 BSP
DLE 30-75 (-GG)	Inlet/Outlet: 1/4BSP
Maximum operating temperature	100°C
Net weight:	19 kg

Pressure and flow performances, please see enclosed graph.

#### Materials of construction hp section DLE 30-75:

Standard seal package:	PTFE, Viton
Compressor head:	1.4305
HP cylinder:	1.4542
HP piston:	1.4305
Fittings:	1.4305
Balls:	1.4034
Springs:	1.4310

#### Approximate Dimensions:

Length:	620 mm
Width:	181 mm
Height:	233 mm

#### Available Options:

Inert gas service (standard)	DLE 30-75 (-GG)
Oxygen service:	DLE 30-75-GG-S
CO <sub>2</sub> service:	DLE 30-75-GG-C
In-/Outlet: 9/16-18UNF	DLE 30-75-UU
In-/Outlet: 1/4NPT	DLE 30-75-NN

#### Available Accessories:

Air control units with filter pressure regulator, control pressure gauge and shut off valve:	DLE 30-75 with C2
To protect the booster against excessive outlet pressures or to limit the outlet pressure, a safety valve can be fitted to the air control unit in the air drive line:	DLE 30-75 with C2/SVair (The required outlet pressure has to be indicated.)

**Please consult factory for more information.** All technical and dimensional information subject to change. All General Terms and Conditions of sale, including limitations of our liability, apply to all products and services sold.

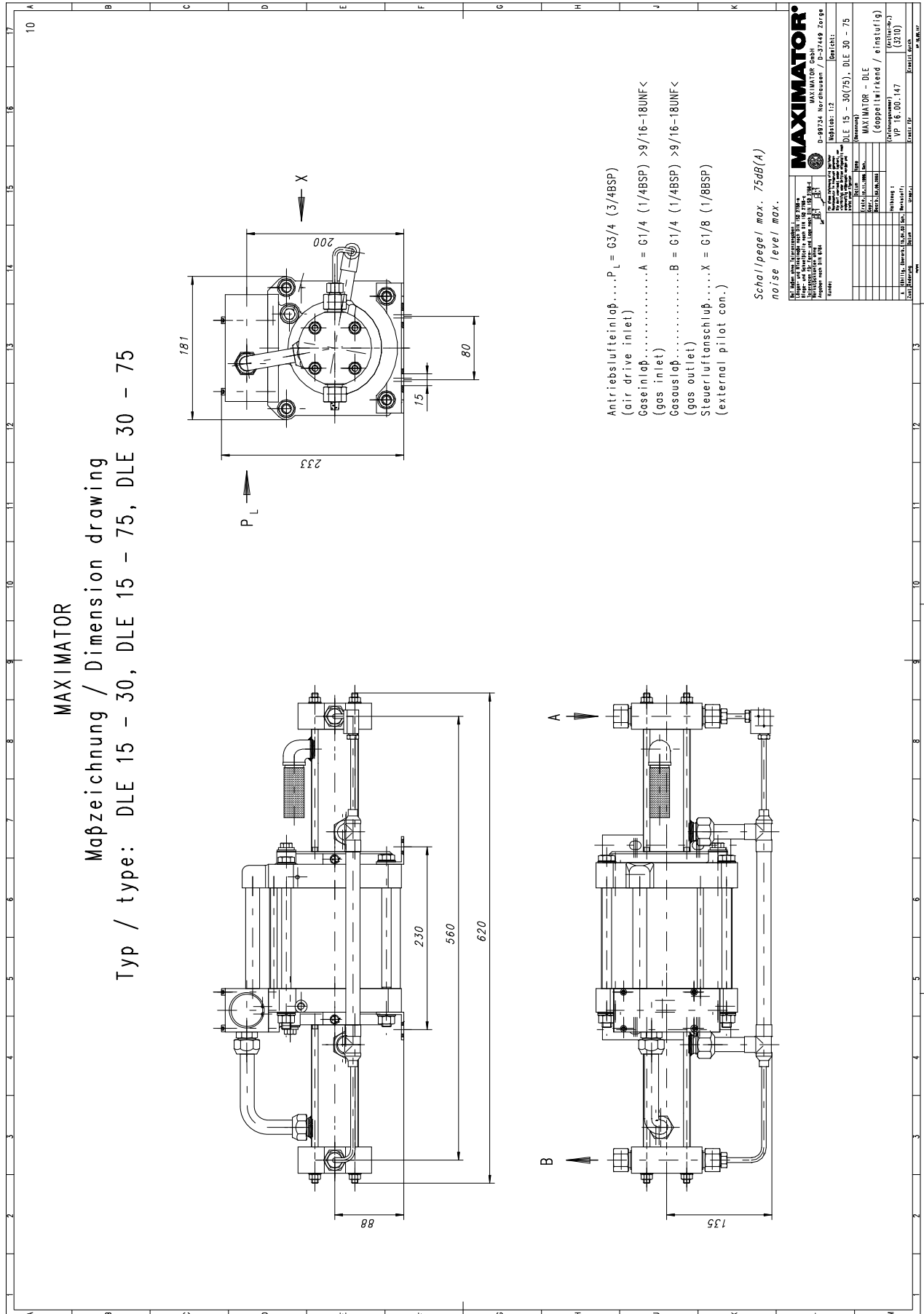
# MAXIMATOR®

## Maximum Pressure.



High Pressure Technology • Testing Equipment  
Hydraulics • Pneumatics

MAXIMATOR  
Maßzeichnung / Dimension drawing  
Typ / type: DLE 15 - 30, DLE 15 - 75, DLE 30 - 75



# MAXIMATOR®

## Maximum Pressure.



High Pressure Technology • Testing Equipment  
Hydraulics • Pneumatics

