

MAXIMATOR®

Maximum Pressure.



High Pressure Technology • Testing Equipment
Hydraulics • Pneumatics

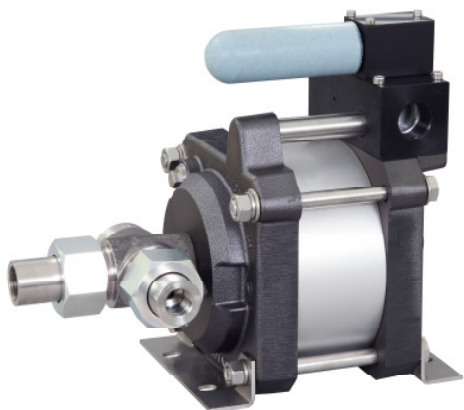
Technical Data Sheet

G400 (L)

» Oil service

G400 (L) VE

» Water service



G400 (L)
single acting, single air drive head, side inlet
(Standard= Bottom inlet, see dimension drawing)

Technical Data:

Air drive pressure:	1-10 bar / 14,5 - 145psi
Calculated Outlet Pressure at an air drive of 10 bar/145 psi:	4000 bar/ 58,000 psi
Pressure ratio:	1:398
Displacement volume/double stroke	2.5 cm ³ / 0.15 cu.inch

Connections:

Inlet:	Standard: Bottom Inlet 1/2 BSP
Outlet:	9/16-18UNF
Air drive:	3/4 BSP
Maximum operating temperature:	60°C
Net weight:	13.5 kg

Pressure and flow performances, please see enclosed graph.

Wetted materials of construction:

Seal package:	G400(L): Polyurethan, NBR G400(L)VE: UHMWPE, FKM
Pump Body:	1.4313
Piston:	1.4112 (hardened)
Fittings:	1.4122

Approximate Dimensions:

Height:	300 mm
Depth:	193.5 mm
Width:	272 mm

Available Options:

Seal material for oil service:	G400 (L)
Seal material for water service:	G400(L)VE
Side inlet	G400(L)S/ G400(L)VES
Special inlet and outlet ports, i.e. NPT	G400(L)-NPT G400(L)VE-NPT

Special seal material to handle special fluids on request.

Available Accessories:

Air control units with filter pressure regulator, control pressure gauge and shut off valve:	G400(L) with C2
To protect the pump against excessive outlet pressures or to limit the outlet pressure, a safety valve can be fitted to the air control unit in the air drive line:	G400(L) with C2/SVair (The required outlet pressure has to be indicated.)

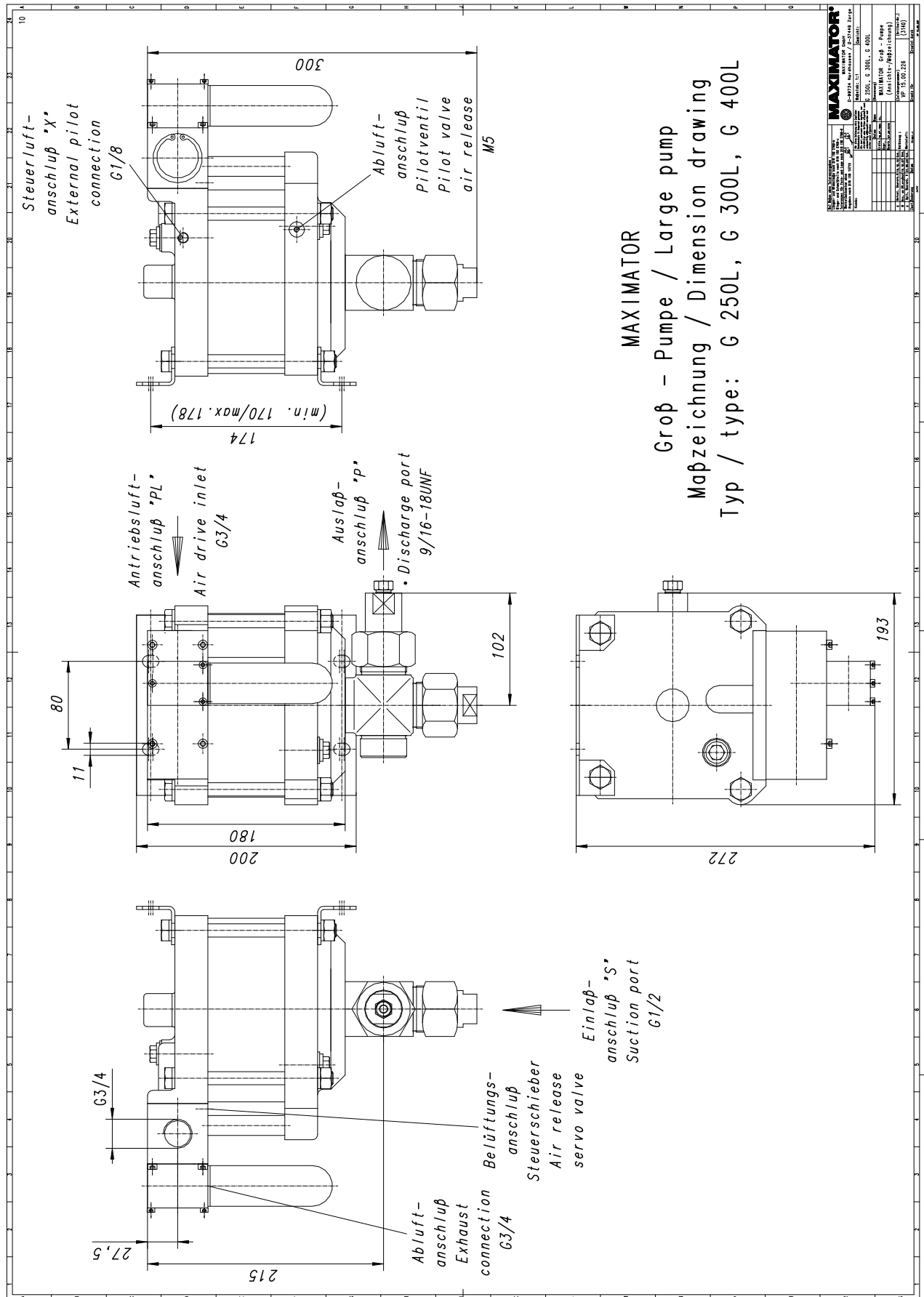
Please consult factory for more information. All technical and dimensional information subject to change. All General Terms and Conditions of sale, including limitations of our liability, apply to all products and services sold.

MAXIMATOR®

Maximum Pressure.



High Pressure Technology • Testing Equipment
Hydraulics • Pneumatics



MAXIMATOR	
MAXIMATOR GmbH	MAXIMATOR Groß - Pumpe
Technische Zeichnung	Abmaßzeichnung
VP 15.00.238	(1/16)
1:1	
10	
11	
12	
13	
14	
15	
16	
17	
18	
19	
20	
21	
22	
23	
24	
25	
26	
27	
28	
29	
30	
31	
32	
33	
34	
35	
36	
37	
38	
39	
40	
41	
42	
43	
44	
45	
46	
47	
48	
49	
50	
51	
52	
53	
54	
55	
56	
57	
58	
59	
60	
61	
62	
63	
64	
65	
66	
67	
68	
69	
70	
71	
72	
73	
74	
75	
76	
77	
78	
79	
80	
81	
82	
83	
84	
85	
86	
87	
88	
89	
90	
91	
92	
93	
94	
95	
96	
97	
98	
99	
100	

Leistungsdiagramm/Performance Graph G 400

Prüfflüssigkeit/Test Liquid: Wasser-Öl-Emulsion/Water Oil Emulsion ca. 1 - 10 cst

