

MAXIMATOR®

Maximum Pressure.



High Pressure Technology • Testing Equipment
Hydraulics • Pneumatics

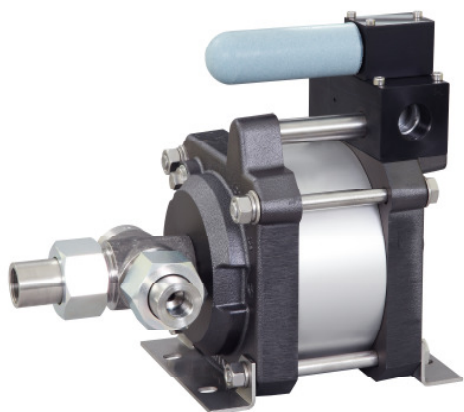
Technical Data Sheet

G100 (L)

» Oil service

G100 (L) VE

» Water service



G100 (L)
single acting, single air drive head
(Standard= Bottom inlet)

Technical Data:

Air drive pressure:	1-10 bar / 14,5 - 145psi
Calculated Outlet Pressure at an air drive of 10 bar/145 psi:	1,050 bar/ 15,225 psi
Pressure ratio:	1:113
Displacement volume/double stroke	8.8cm ³ / 0.54 cu.inch

Connections:

Inlet:	Standard: Bottom Inlet 3/4 BSP
Outlet:	1/2 BSP
Air drive:	3/4 BSP
Maximum operating temperature:	60°C
Net weight:	13.5 kg

Pressure and flow performances, please see enclosed graph.

Wetted materials of construction:

Seal package:	G100(L): Polyurethan, NBR G100(L)VE: UHMWPE, FKM
Pump Body:	1.4305
Piston:	1.4112 (hardened)
Fittings:	1.4571

Approximate Dimensions:

Height:	321 mm
Depth:	184.5 mm
Width:	272 mm

Available Options:

Seal material for oil service:	G100 (L)
Seal material for water service:	G100(L)VE
Side inlet	G100(L)S/ G100(L)VES
Special inlet and outlet ports, i.e. NPT	G100(L)-NPT G100(L)VE-NPT

Special seal material to handle special fluids on request.

Available Accessories:

Air control units with filter pressure regulator, control pressure gauge and shut off valve:	G100(L) with C2
To protect the pump against excessive outlet pressures or to limit the outlet pressure, a safety valve can be fitted to the air control unit in the air drive line:	G100(L) with C2/SVair (The required outlet pressure has to be indicated.)

Please consult factory for more information. All technical and dimensional information subject to change. All General Terms and Conditions of sale, including limitations of our liability, apply to all products and services sold.

Leistungsdiagramm/Performance Graph G(SF) 100

Prüfflüssigkeit/Test Liquid: Wasser-Öl-Emulsion/Water Oil Emulsion ca. 1 - 10 cst

