

# MAXIMATOR®

## Maximum Pressure.

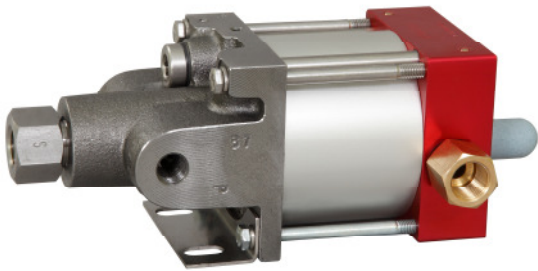


High Pressure Technology • Testing Equipment  
Hydraulics • Pneumatics

### Technical Data Sheet

MO111

» Oil service



MO111  
single acting, single air drive head  
(Standard= Bottom inlet)

#### Technical Data:

Air drive pressure:	1-10 bar / 14,5 - 145psi
Calculated Outlet Pressure at an air drive of 10 bar/145 psi:	1,000 bar/ 14,504 psi
Pressure ratio:	1:133
Displacement volume/double stroke	1.0 cm <sup>3</sup> / 0.06 cu.inch

#### Connections:

Inlet:	Standard: Bottom Inlet 3/8 BSP
Outlet:	1/4 BSP
Air drive:	3/8 BSP
Maximum operating temperature:	60°C
Net weight:	3.0 kg

Pressure and flow performances, please see enclosed graph.

#### Wetted materials of construction:

Top cap:	Aluminium
Air cylinder:	Aluminium
Seal package:	Polyurethane, NBR
Pump Body:	GGG50
Piston:	1.4112 (hardened)

#### Approximate Dimensions:

Height:	195 mm
Depth:	104 mm
Width:	112 mm

#### Available Options:

Side inlet	MO111S
External pilot port modification	MO111-DIR
Special inlet and outlet ports, i.e. NPT	MO111-NPT
Special seal material to handle special fluids on request.	

#### Available Accessories:

Air control units for M series with filter pressure regulator, control pressure gauge and shut off valve: MO111 with C1

To protect the pump against excessive outlet pressures or to limit the outlet pressure, a safety valve can be fitted to the air control unit in the air drive line: MO111 with C1/SVair (The required outlet pressure has to be indicated.)

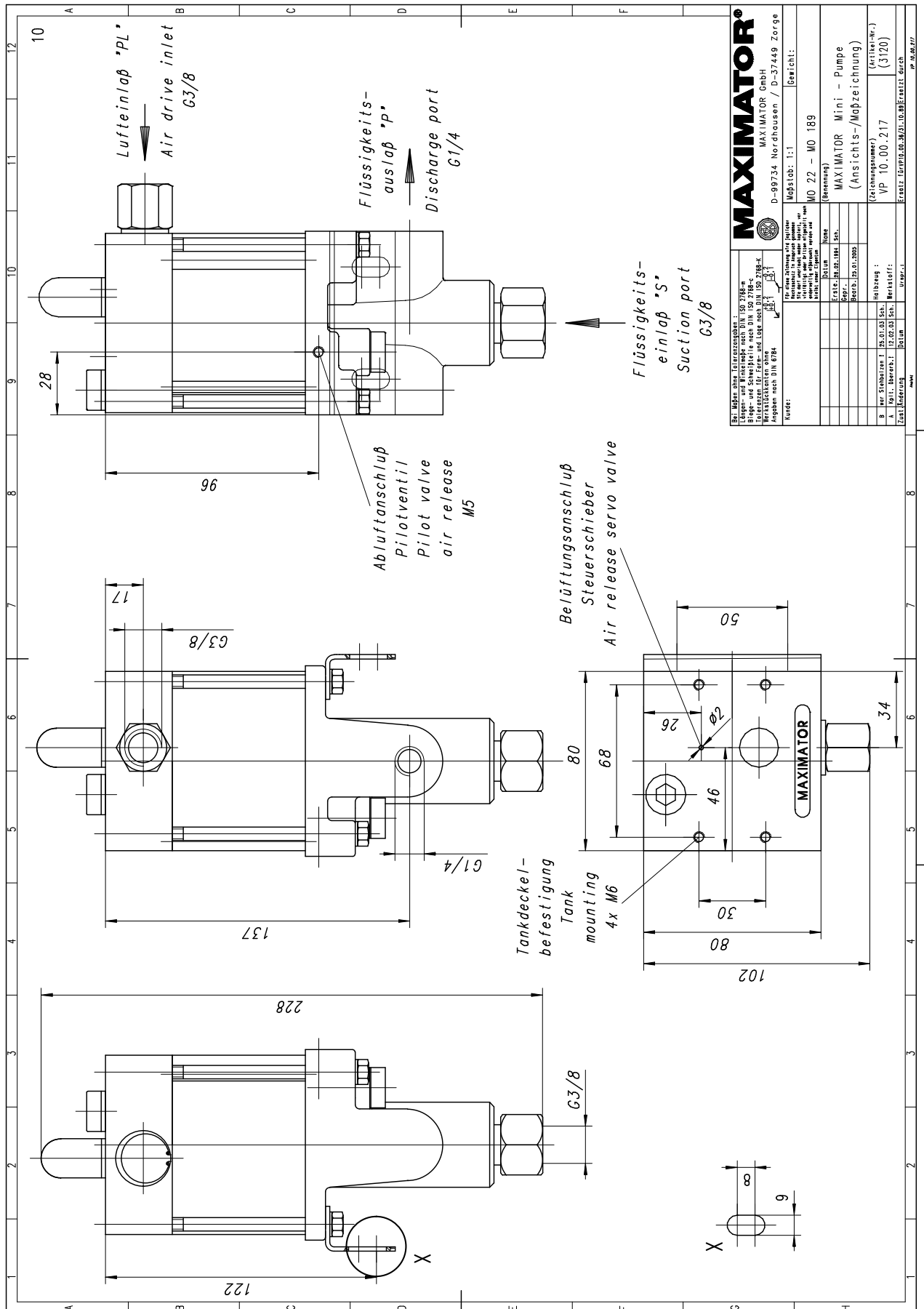
**Please consult factory for more information.** All technical and dimensional information subject to change. All General Terms and Conditions of sale, including limitations of our liability, apply to all products and services sold.

# MAXIMATOR®

## Maximum Pressure.



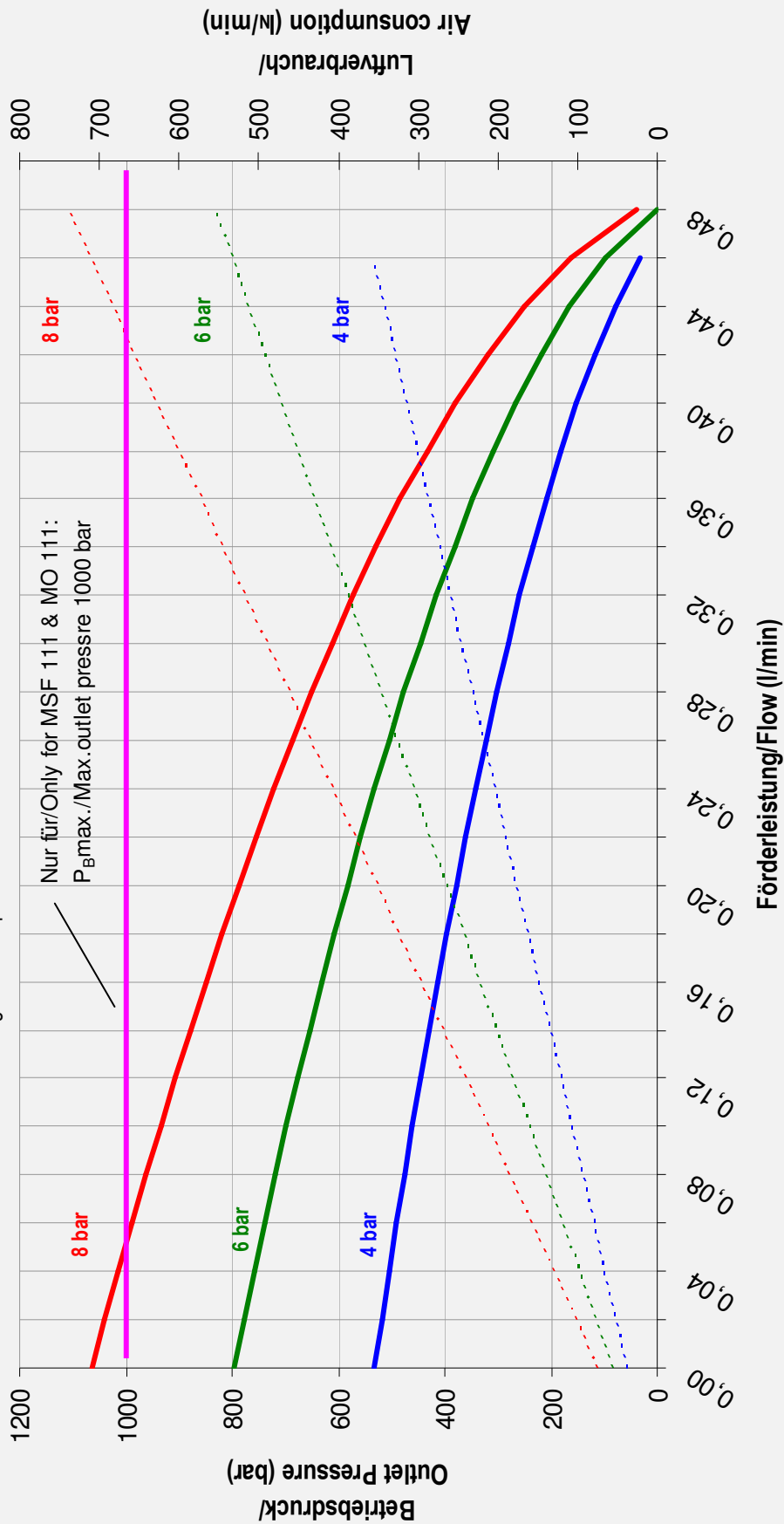
High Pressure Technology • Testing Equipment  
Hydraulics • Pneumatics



### Leistungsdiagramm/Performance Graph M(O)(SF) 111

Prüfflüssigkeit/Test Liquid: Wasser-Öl-Emulsion/Water Oil Emulsion ca. 1 - 10 cst

Nur für/Only for MSF 111 & MO 111:  
P<sub>B</sub>max./Max.outlet pressure 1000 bar



- Betriebsdruck bei/Outlet Pressure at 4 bar
- Betriebsdruck bei/Outlet Pressure at 6 bar
- Betriebsdruck bei/Outlet Pressure at 8 bar
- ... Luftverbrauch bei/Air consumption at 4 bar
- ... Luftverbrauch bei/Air consumption at 6 bar
- ... Luftverbrauch bei/Air consumption at 8 bar